

Your Skin Tells a Story

Understanding Whole-Body Connections

Lori Ann Griffin

Centuries ago, Eastern cultures mapped and documented the intricate and deep relationship between the skin and the body's organs and systems, noting that the skin displays clues as to what types of stresses or malfunctions may exist and persist internally.

Digestive System

The organs involved include the mouth, pharynx, esophagus, stomach, pancreas, intestines, gall bladder, and liver. The digestive system performs the function of nutritional uptake and absorption, and waste elimination. When this process slows, a backup occurs, which can stress all of the digestive organs.

forehead and hairline. If the intestinal stress is longer term, wrinkles or lines may appear in both regions. Liver stress can produce puffiness, redness, and blackheads in the glabellar region between the eyebrows.

Reproductive System

Another system of consistent focus is the hormonal, or reproductive, system. Organs involved in this complex tapestry include the uterus, ovaries, adrenals, and testicles, in addition to the pituitary and hypothalamus glands. Hormones are chemical messengers that have a potent effect on the body and are released into the bloodstream at fluctuating levels.



Internal wellness complements your skin care treatments, providing optimum results.

SKIN MANIFESTATIONS

Externally, we may notice bloating in the stomach or abdominal region. But less obvious are signs on the chin that may show up as impactions, inflamed lesions, and abnormal capillary activity.

Eczema or related dermatitis conditions may be worsened along the high

SKIN MANIFESTATIONS

High testosterone levels can cause or exacerbate acne lesions. This is especially true above, along, and under the jawline. Estrogen dominance often causes pigmentation in the upper lip, cheeks, and sometimes the lower forehead. Declining estrogen causes

Continued on page 2

Office Hours and Contact

Radiant Skin Therapy

Rosemarie H Hunter

304-542-6608

Monday thru Friday 10 a.m. - 7 p.m.

Saturday 10 a.m. to 4 p.m.

www.fresh.skincaretherapy.net

In this Issue

Your Skin Tells a Story

A Peek Into Peels

The Art of Aromatherapy

Continued from page 1

underactivity of the sebaceous glands, leading to dryness.

Immune System

This system includes the tonsils, spleen, and lymph nodes, and governs the skin's response to invading foreign material, or perceived threats. It may respond with swelling, reddening, itching, burning, or rash, and the eyes and nose may also be watery and runny. Inflammation of the sinus passages, sore throat, sneezing, and coughing are the most common symptoms.

SKIN MANIFESTATIONS

Our poor eyes and upper cheeks take the brunt of this assault. Dilated capillaries, tenderness, and pressure, as well as swelling and stinging upon physical contact may also be present.

Respiratory System

The major organs involved here are the lungs and bronchial tubes. These passageways become constricted with adrenal distress and allergies, or exposure to bacteria, viruses, or smoke.

SKIN MANIFESTATIONS

The greater cheek area can present with breakouts, excessive capillary activity, flushing, and heat. The undereye area may exhibit half circles of gray, blue, or purplish tones.

Excretory System

The elimination system is also very important. In this system, the kidneys, bladder, colon, veins, and skin do most of the work. This fine-tuned orchestra removes bacteria, waste product, and toxic materials in an effort to protect the health and lives of our cells.

SKIN MANIFESTATIONS

Kidney stress may lead to hot, red, or pigmented upper ears. Bladder stress can deepen lines across the center of the forehead. And colon stress can contribute to cracked, pigmented, or dehydrated lips. The upper chin area can see an increase in micro-comedones and irritation.

Nervous System

No system will suffer more from disharmonies than our central nervous system. The vast array of nerve fibers, residing mostly along our spinal

column, sends and receives signals to and from the brain. Many organs and glands are affected by stress, but the adrenals are often the first to respond.

SKIN MANIFESTATIONS

On the face, this may manifest as sweatiness and increased oil production over the brows and along the top bridge of the nose, with blotchy red patterns and heat on the lower neck and center of the decollete regions. Eczema is heightened around the base of the neck and may leave a long-term mask of hyperpigmentation.

Cardiovascular System

The cardiovascular system is tricky because it deals with not just the heart's function, which is chiefly to pump blood, but also because of its connection to the circulatory system, which delivers nutrients, water, hormones, white blood cells, and oxygen to every cell in the body.

SKIN MANIFESTATIONS

When blood pressure levels fluctuate, blood-capillary dilation on the sides of

the nose and nostrils can often be observed. Enlarged pores and hard comedones are also seen on the nostrils and tip of the nose when cardiac edemas and other cardiac diseases take hold.

Partnering for Health

Skin health can provide insight into whole-body health. Work closely with your esthetician to determine how best to treat the manifestations, and discuss prevention techniques as well. Remember, your skin care professional is not qualified to diagnose conditions, but your skin may be providing clues to what's going on internally. And you may discover that your esthetician is an essential part of your care team.



Your skin condition can provide clues into whole body health.

A Peek Into Peels

Chemical peels have become increasingly popular over the past few years. Once a strictly medical procedure, peels entered the beauty industry in the 1980s as a way to rejuvenate aging skin, smooth lines, even out skin tone, fade dark spots, minimize enlarged pores, improve acne, and generally promote healthier skin.

Technically speaking, the peels offered in spas and salons across the country aren't really peels, but are a kind of resurfacing that many refer to as chemical exfoliation. Deeper peels are considered medical procedures because of how deeply they penetrate skin and are done by medical care providers. These peels use much more potent chemicals and are substantially more expensive, costing several hundred dollars.

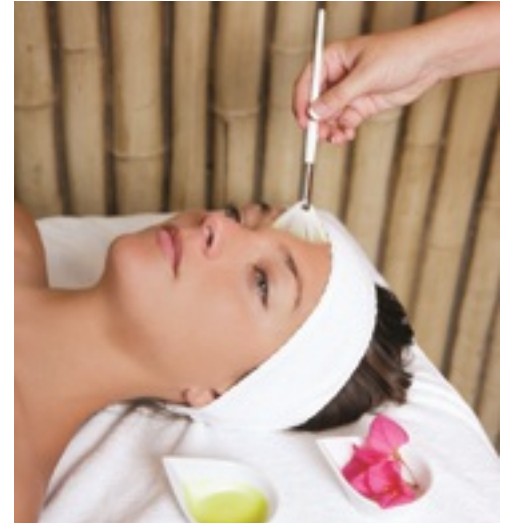
Chemical exfoliation, a treatment you can receive from your esthetician, involves applying one or more acids to

facial skin to remove the outermost layer. In general, chemical exfoliation involves the use of alpha hydroxy acids, which are naturally found in foods. The most common are glycolic acid that is derived from sugar cane, and lactic acid from sour milk. These acids have a long track record of treating dry skin and hyperpigmentation, and of reversing the effects of aging. Another frequently used substance is salicylic acid. Derived from the bark of the willow tree, it is an oil-grabber that helps unclog pores.

After a chemical exfoliation, you must take good care of your skin or risk developing dark patches. Skin will be especially sensitive to sunburn for about a week after the peel, so sunscreen is a must, even on cloudy days. Other potential side effects include flaking or scabbing.

Not everyone is a good candidate for chemical exfoliation. Dark-skinned and olive-toned individuals are at greater

risk for scarring. Some medications and medical conditions, like pregnancy or autoimmune disorders, may preclude you from this treatment.



Chemical peels help to promote healthier skin.

The Art of Aromatherapy

Essential Oils Provide Healing and Balance

Aromatic essential oils extracted from herbs, flowers, resin, wood and roots have long been a source of healing since ancient times, aiding in relaxation, circulation and wound healing. However, the use of these medicinal oils declined as the modern pharmaceutical industry developed. In 1928, French chemist Rene Maurice Gattefosse revived the use of essential oils and developed the art and science of utilizing naturally extracted aromatic essences from botanicals to balance and harmonize the health of body, mind and spirit. Gattefosse coined the practice aromatherapy.

Because aromatherapy's affect on emotional health, many massage therapists and bodywork practitioners incorporate this noninvasive treatment

into their practices. Dispensers or diffusers filled with aromatic essences may be used to scent the massage room, and specific essential oils are used on the client's skin during the massage. Because each oil has unique characteristics and benefits, the choice of oil or oils can be customized to the client's needs and emotional state. Whether inhaled or applied topically, aromatherapy requires an understanding of how each essential oil interacts with the body, as well as the mind.

Many pure essential oils need to be diluted, as they can cause irritation when applied directly to the skin. To guarantee safe and correct usage, consult a trained herbalist or practitioner.

The emotions listed below can be gently eased by one or a combination of the following essential oils:

Anxiety: bergamot, cedarwood, clary sage, frankincense, lavender, patchouli, Roman chamomile, rose, sandalwood.

Fatigue, Burnout: basil, ginger, grapefruit, jasmine, lemon, peppermint, rosemary, sandalwood.

Stress: bergamot, frankincense, geranium, lavender, mandarin, neroli, patchouli, Roman chamomile, ylang ylang.

Anger: jasmine, neroli, orange,

Welcome to the Radiant Skin Therapy Newsletter! I have included articles that are beneficial to promoting your healthiest skin. Remember to share the information included with those you care about as well. I look forward to working with you on your skin care regimen to give you that radiance we all want that reflects health! Please do share this page on your Facebook and Twitter accounts for your friends and family to benefit from the free information inside.

**FALL SPECIAL!!!! BEGINNING SEPTEMBER 1,2012
MENTION THIS NEWSLETTER AND RECEIVE A FREE
EUROPEAN FACIAL WITH ANY MICRO-DERMABRASION
OR CHEMICAL PEEL!**

Radiant Skin Therapy

878 Oakwood Rd.
CHARLESTON, WV 25314

MEMBER

